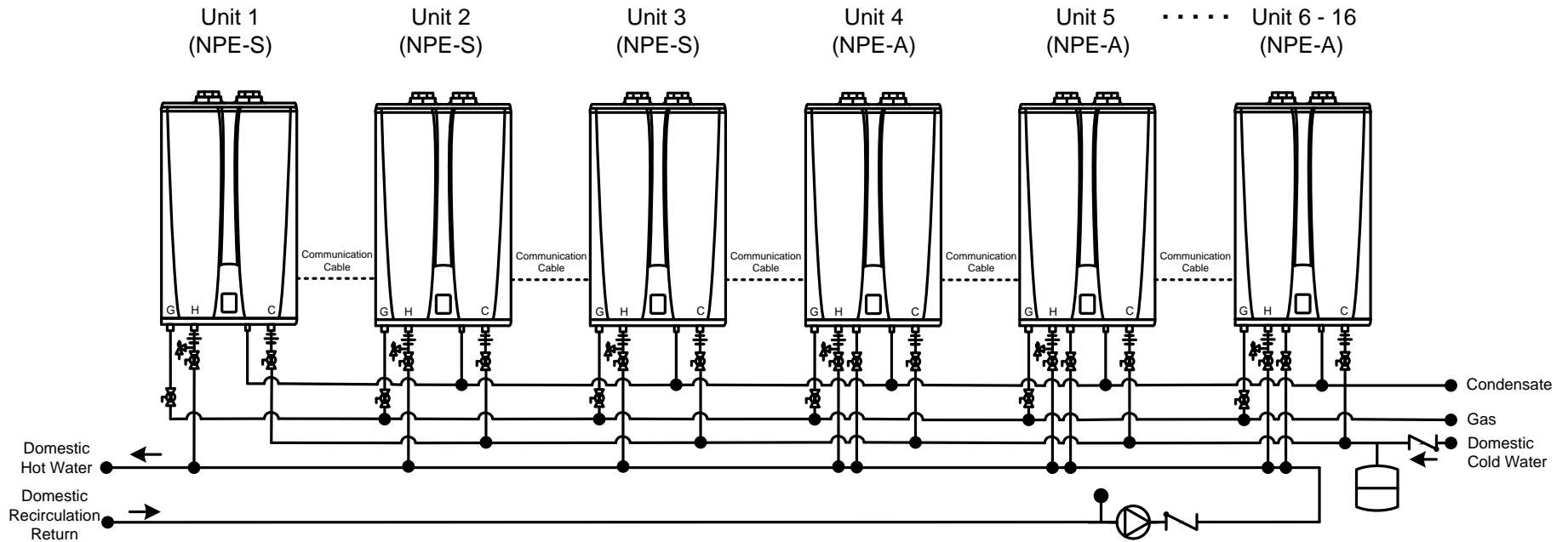


This drawing is intended only as a guide and not as a replacement for professionally engineered project drawings. This concept system drawing does not imply compliance with local building codes. Actual installation may vary depending on installation location & parameters and it must be done in accordance to all local building codes. Verify with local building officials before commencement of system installation.

- Note:**
 Applications with a mixture of Navien NPE-A (Circulation) & NPE-S (Standard) the following should be followed:
 1. 50% of Tankless Units shall be NPE-A Models
 2. Minimum of 2 NPE-A (2 of 3-4, 3 of 6)



Recommended Pipe Size/Heater Count	1 Unit - 3/4"	2 Units - 1"	3 Units - 1-1/4"	4 to 5 Units - 1-1/2"	6 to 8 Units - 2"	9 to 14 Units - 2-1/2"	15 to 16 Units - 3"
------------------------------------	---------------	--------------	------------------	-----------------------	-------------------	------------------------	---------------------



20 Goodyear
 Irvine, CA 92618
 800-519-8794

www.navienamerica.com

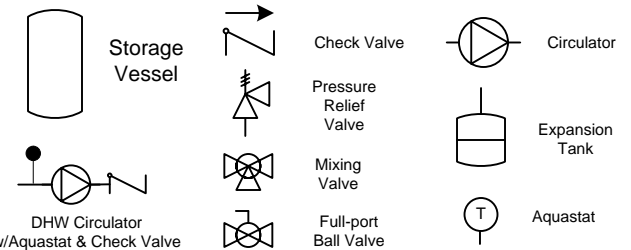
NPE-A\S Series Tankless Water Heater

Six Plus NPE-A\NPE-S Tankless External Recirculation Mode With External Circulator

Drawn By: B. Fenske

NPE-A-S-6P-EC-BF02

August 1, 2013



DHW Circulator w/Aquastat & Check Valve