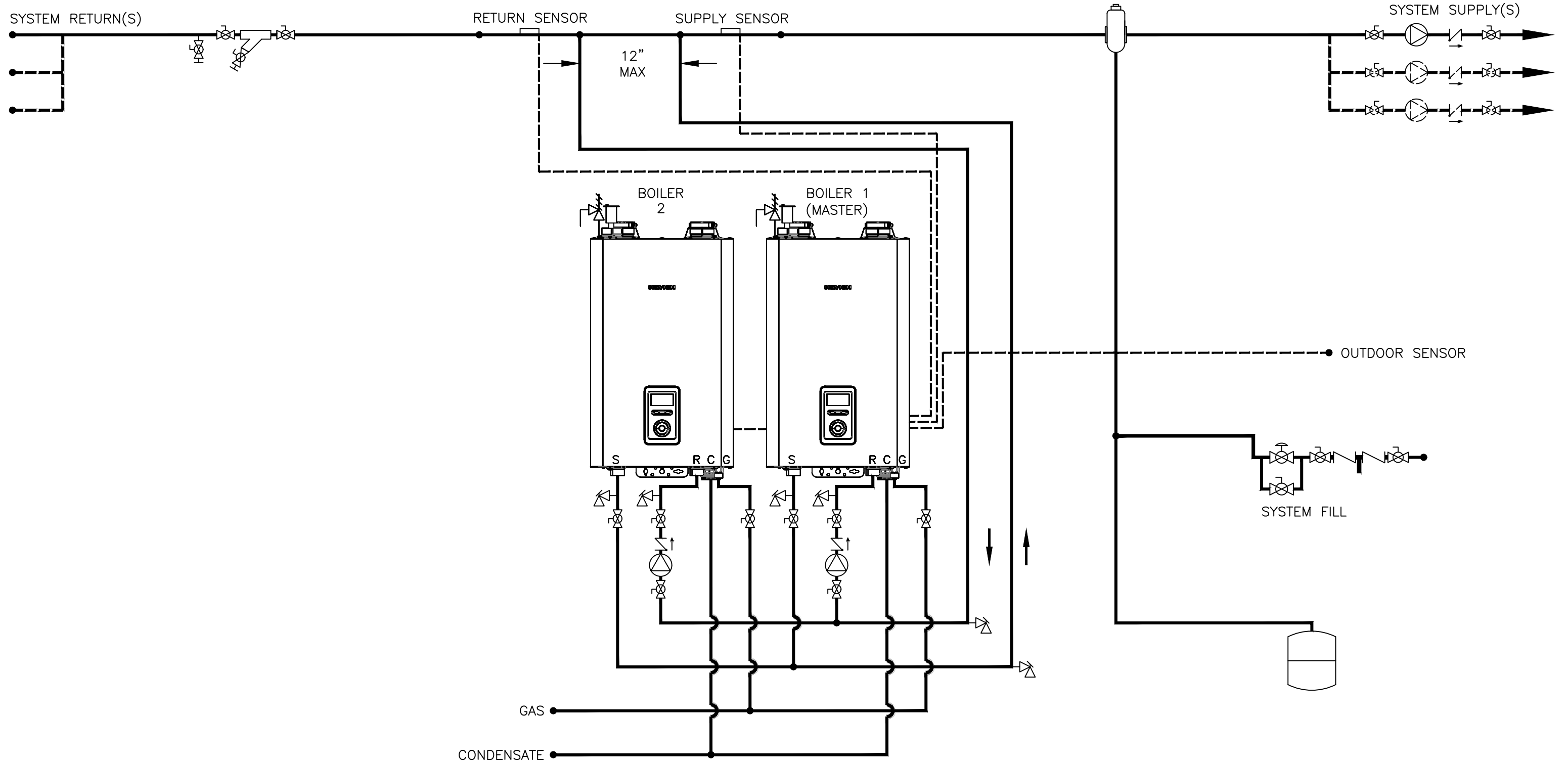


THIS DRAWING IS INTENDED ONLY AS A GUIDE AND NOT AS A REPLACEMENT FOR PROFESSIONALLY ENGINEERED PROJECT DRAWINGS THIS CONCEPT SYSTEM DRAWING DOES NOT IMPLY COMPLIANCE WITH LOCAL BUILDING CODES. ACTUAL INSTALLATION MAY VARY DEPENDING ON INSTALLATION LOCATION AND PARAMETERS AND IT MUST BE DONE IN ACCORDANCE TO ALL LOCAL BUILDING CODES. VERIFY WITH LOCAL BUILDINGS OFFICIALS BEFORE COMMENCEMENT OF SYSTEM INSTALLATION.

RECOMMENDED SYSTEM & HEADER PIPE SIZES - TOTAL BTU (>4 Ft/Sec.) 2" - 350,000 TO 398,00 BTU'S (2 BOILERS)
 2 1/2" - 525,000 TO 796,000 BTU'S (3 & 4 BOILERS) 3" - 875,000 TO 1,300,000 BTU'S (5-7 BOILERS)
 4" - 1,400,000 TO 3,185,000 BTU'S (8 TO 16 BOILERS)



---NAVIEN COMMUNICATION CABLE (1 LESS THAN TOTAL BOILER COUNT REQUIRED)

KD Navien
 20 GOODYEAR
 IRVINE, CA 92618
 800-519-8794
 www.navieninc.com

NFB SERIES CONDENSING-BOILER

NAVIEN NFB-175/199 TWO MULTIPLE BOILER APPLICATION
 COMMON SECONDARY INJECTION PIPING

DRAWN BY: J.GARCIA NFB-175-199-2MULT-C-JG02 JULY 26, 2019

| | | | | | | | |
|--|---|--|-----------------------|--|-----------------|--|--------------------|
| | AIR ELIMINATION | | CHECK VALVE | | FULL-PORT VALVE | | AQUASTAT |
| | ZONE VALVE | | PRESSURE RELIEF VALVE | | CIRCULATOR | | BACKFLOW PREVENTOR |
| | DHW CIRCULATOR W/AQUASTAT & CHECK VALVE | | MIXING VALVE | | EXPANSION TANK | | SOLENOID VALVE |