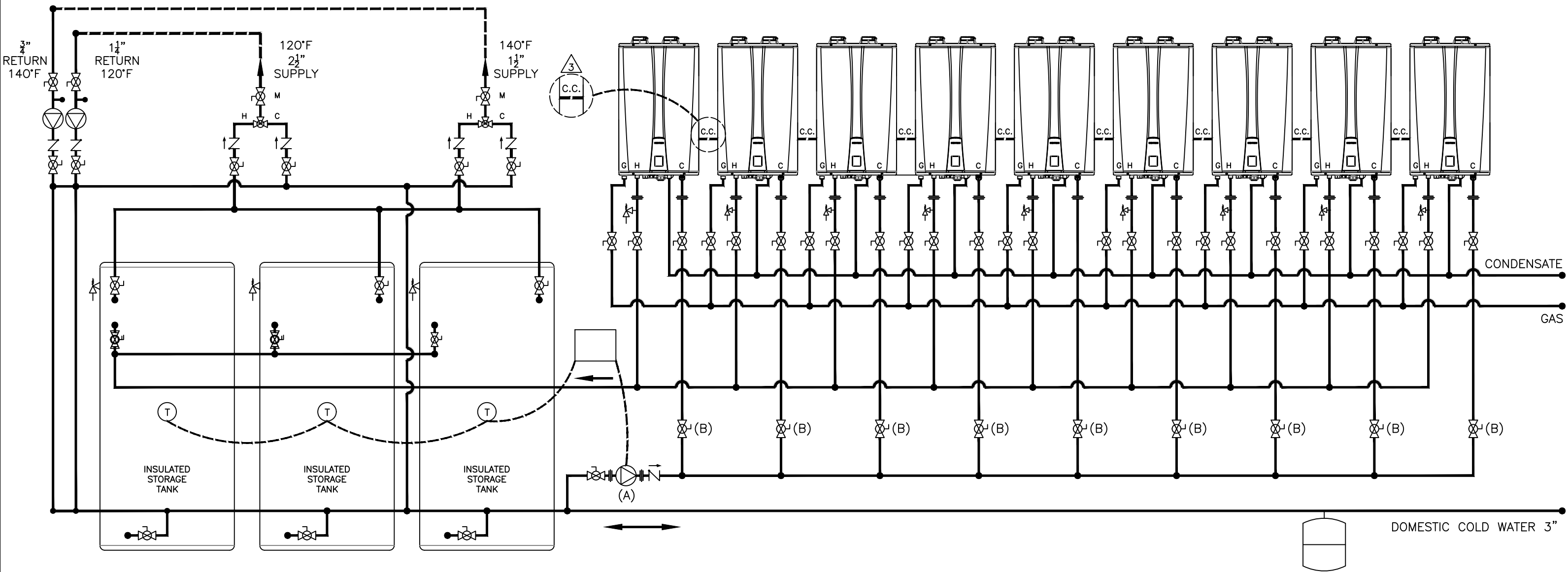


THIS DRAWING IS INTENDED ONLY AS A GUIDE AND NOT AS A REPLACEMENT FOR PROFESSIONALLY ENGINEERED PROJECT DRAWINGS THIS CONCEPT SYSTEM DRAWING DOES NOT IMPLY COMPLIANCE WITH LOCAL BUILDING CODES. ACTUAL INSTALLATION MAY VARY DEPENDING ON INSTALLATION LOCATION AND PARAMETERS AND IT MUST BE DONE IN ACCORDANCE TO ALL LOCAL BUILDING CODES. VERIFY WITH LOCAL BUILDINGS OFFICIALS BEFORE COMMENCEMENT OF SYSTEM INSTALLATION.



NOTES: UNLESS OTHERWISE SPECIFIED

- (A) TANKLESS CIRCULATOR (BRONZE OR S.S.) SELECTED SHALL BE 36 GPM MAX (4 PER TANKLESS) @ 23' TOTAL HEAD (10 PSI) + PIPE, VALVES, FITTING & TANK.
 - (B) INSTALL CIRCUIT SETTERS TO MAINTAIN FLOW INTO UNITS @ 4 GPM MAXIMUM.
- △ COMMUNICATION CABLE IS ABBREVIATED BY C.C.

RECOMMENDED PIPE SIZE/HEATER COUNT	1 UNIT - 3/4"	2 UNIT - 1"	3 UNIT - 1-3/4"	4 TO 5 UNITS - 1-1/2"	6 TO 8 UNITS - 2"	9 TO 14 UNITS - 2-1/2"	15 TO 16 UNITS - 3"
------------------------------------	---------------	-------------	-----------------	-----------------------	-------------------	------------------------	---------------------

KD Navien
 20 GOODYEAR
 IRVINE, CA 92618
 800-519-8794
 www.navieninc.com

NPE-S SERIES TANKLESS WATER HEATER

NINE NPE-S WITH 3 STORAGE TANKS TO MEET FLOW/TEMP RISE REQUIREMENT TWO TEMPERATURE SYSTEM KUTZTOWN HAMPTON INN AND SUITES

DRAWN BY: J.GARCIA NPE-S-9-3ST-JG01 JUNE 11, 2019

AIR ELIMINATION	CHECK VALVE	FULL-PORT VALVE	AQUASTAT
ZONE VALVE	PRESSURE RELIEF VALVE	CIRCULATOR	BACKFLOW PREVENTOR
DHW CIRCULATOR W/AQUASTAT & CHECK VALVE	MIXING VALVE	EXPANSION TANK	SOLENOID VALVE