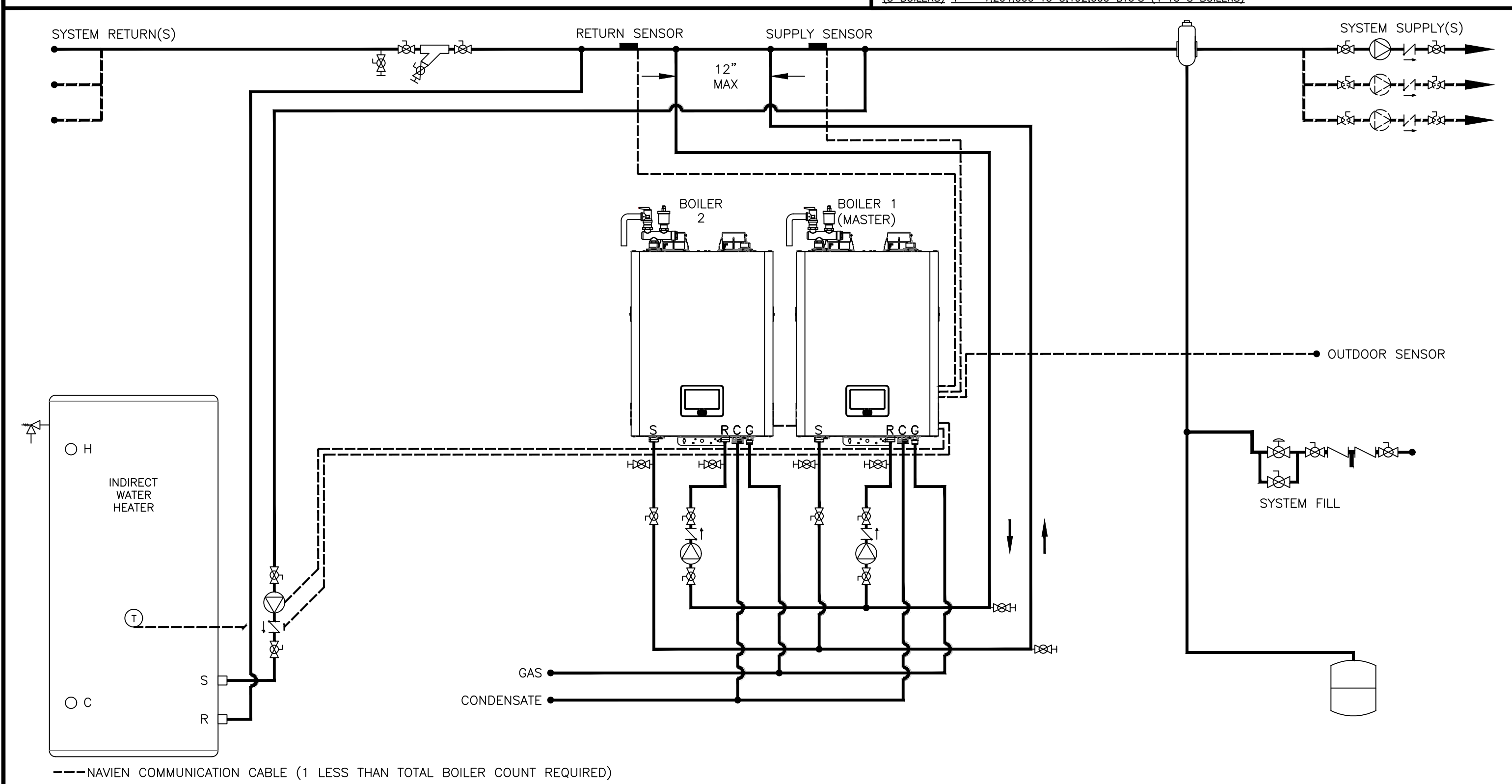


THIS DRAWING IS INTENDED ONLY AS A GUIDE AND NOT AS A REPLACEMENT FOR PROFESSIONALLY ENGINEERED PROJECT DRAWINGS THIS CONCEPT SYSTEM DRAWING DOES NOT IMPLY COMPLIANCE WITH LOCAL BUILDING CODES. ACTUAL INSTALLATION MAY VARY DEPENDING ON INSTALLATION LOCATION AND PARAMETERS AND IT MUST BE DONE IN ACCORDANCE TO ALL LOCAL BUILDING CODES. VERIFY WITH LOCAL BUILDINGS OFFICIALS BEFORE COMMENCEMENT OF SYSTEM INSTALLATION.

RECOMMENDED SYSTEM & HEADER PIPE SIZES - TOTAL BTU (>4 Ft/Sec.) 1 1/2" - UP 301,000 BTU'S (1 BOILER)  
 2" - 399,000 BTU'S (1 BOILERS) 2 1/2" - 601,000 TO 798,000 BTU'S (2 BOILERS) 3" - 903,000 TO 1,197,000 BTU'S (3 BOILERS) 4" - 1,204,000 TO 3,192,000 BTU'S (4 TO 8 BOILERS)



20 GOODYEAR  
 IRVINE, CA 92618  
 800-519-8794  
 www.navieninc.com

NFB-C SERIES CONDENSING-BOILER

NAVIEN NFB-C 301/399 TWO MULTIPLE BOILER APPLICATION WITH ONE INDIRECT WATER HEATER COMMON SECONDARY INJECTION PIPING

DRAWN BY: J.GARCIA

NFB-C-301-399-2MULT-C-1IND-JG01

OCT 14, 2019

|  |   |  |                   |  |                 |  |                    |
|--|---|--|-------------------|--|-----------------|--|--------------------|
|  | AIR ELIMINATION                         |  | CHECK VALVE       |  | FULL-PORT VALVE |  | AQUASTAT           |
|  | ZONE VALVE                              |  | BALL VALVE DRAINS |  | CIRCULATOR      |  | BACKFLOW PREVENTOR |
|  | DHW CIRCULATOR W/AQUASTAT & CHECK VALVE |  | MIXING VALVE      |  | EXPANSION TANK  |  | SOLENOID VALVE     |