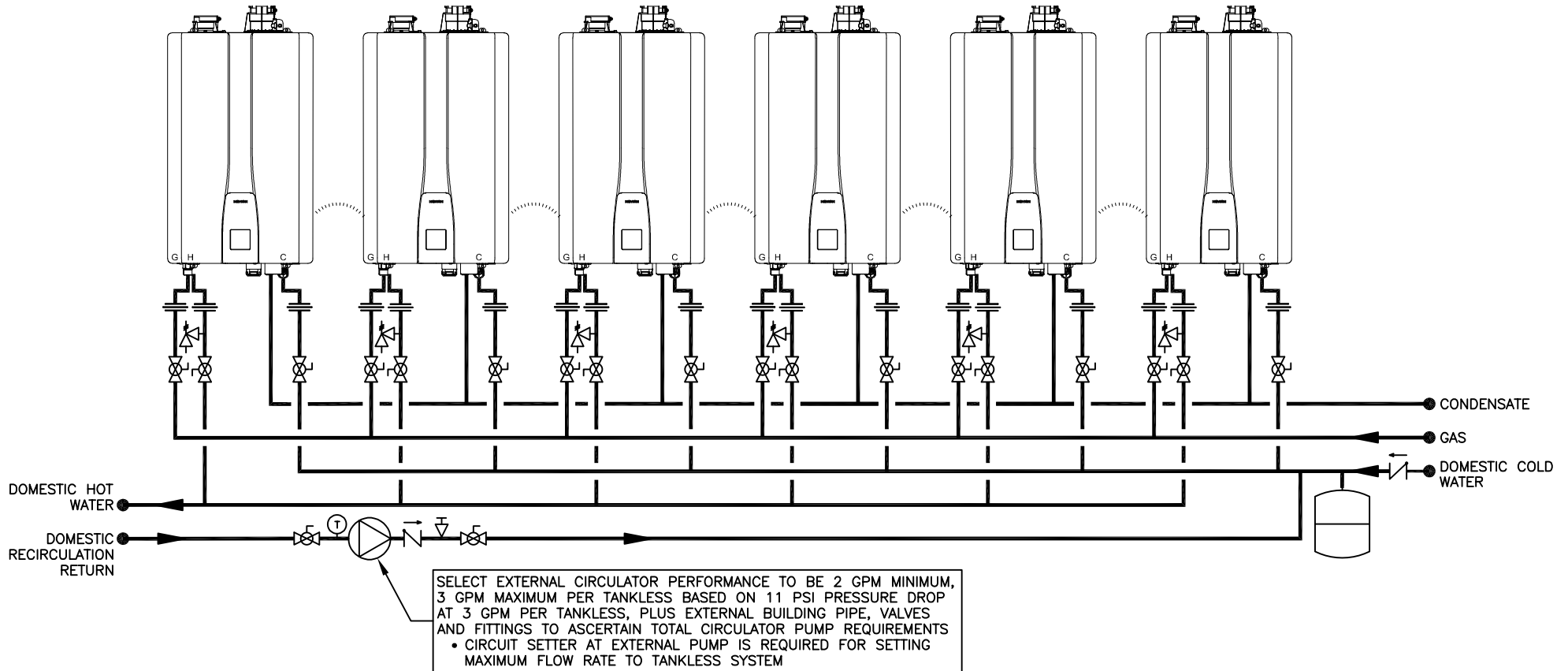


THIS DRAWING IS INTENDED ONLY AS A GUIDE AND NOT AS A REPLACEMENT FOR PROFESSIONALLY ENGINEERED PROJECT DRAWINGS. THIS CONCEPT SYSTEM DRAWING DOES NOT IMPLY COMPLIANCE WITH LOCAL BUILDING CODES. ACTUAL INSTALLATION MAY VARY DEPENDING ON INSTALLATION LOCATION AND PARAMETERS AND IT MUST BE DONE IN ACCORDANCE TO ALL LOCAL BUILDING CODES. VERIFY WITH LOCAL BUILDINGS OFFICIALS BEFORE COMMENCEMENT OF SYSTEM INSTALLATION. CHANGES OR MODIFICATIONS TO PIPING OR DESIGN IS NOT TO BE PERFORMED WITHOUT EXPRESSED WRITTEN PERMISSION BY NAVIEN, INC.



TANKLESS QUANTITY: RECOMMENDED PIPE SIZE	1 UNIT: 3/4"	2 UNITS: 1"	3 UNITS: 1-1/4"	4-5 UNITS: 1-1/2"	6-8 UNITS: 2"	9-14 UNITS: 2-1/2"	15-16 UNITS: 3"
------------------------------------------	--------------	-------------	-----------------	-------------------	---------------	--------------------	-----------------

SYMBOL LEGEND

	UNION		CHECK VALVE		FULL-PORT VALVE		AQUASTAT
	DHW CIRCULATOR W/ AQUASTAT, OPTIONAL TIMER & CHECK VALVE		PRESSURE RELIEF VALVE		CIRCULATOR		EXPANSION TANK
	CASCADE CABLE		BALANCING VALVE				



20 GOODYEAR
IRVINE, CA 92618
800-519-8794
www.navienc.com

NPE-S2 SERIES TANKLESS WATER HEATER

(6) NPE-S2 TANKLESS WATER HEATERS
WITH EXTERNAL RECIRCULATION PUMP
INCLUDES MODELS 150, 180, 210 AND 240

DRAWN BY: S. STOEKE

NPE-S2-6-ECP

MAY 20, 2021