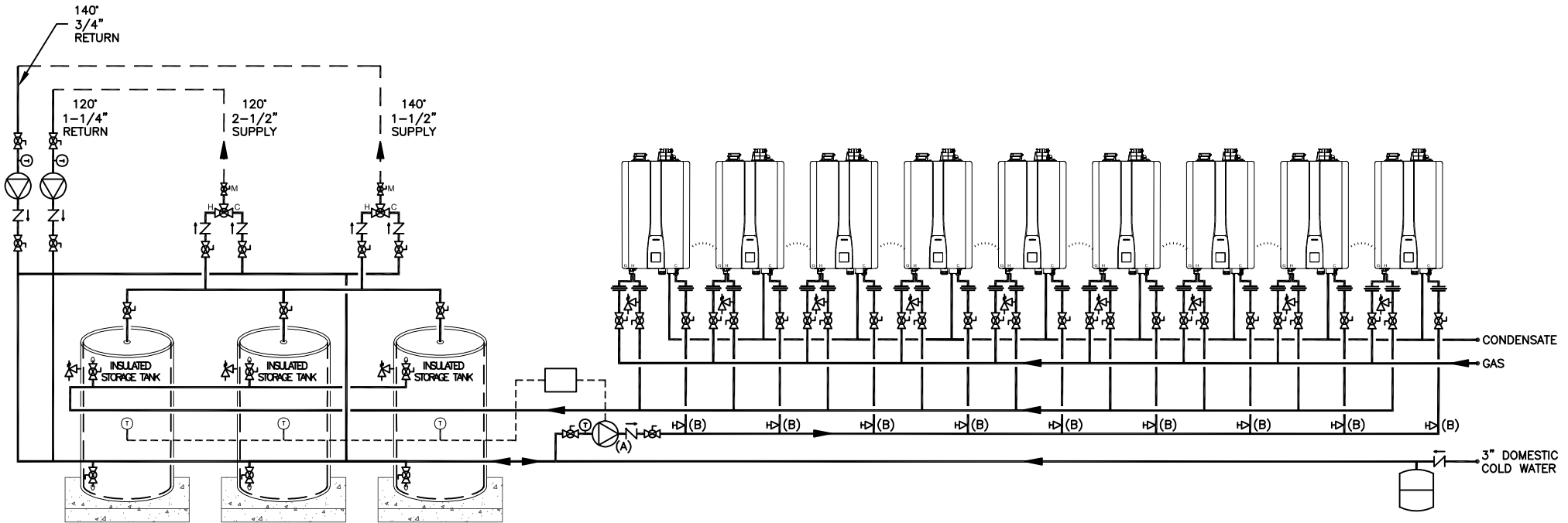


THIS DRAWING IS INTENDED ONLY AS A GUIDE AND NOT AS A REPLACEMENT FOR PROFESSIONALLY ENGINEERED PROJECT DRAWINGS. THIS CONCEPT SYSTEM DRAWING DOES NOT IMPLY COMPLIANCE WITH LOCAL BUILDING CODES. ACTUAL INSTALLATION MAY VARY DEPENDING ON INSTALLATION LOCATION AND PARAMETERS AND IT MUST BE DONE IN ACCORDANCE TO ALL LOCAL BUILDING CODES. VERIFY WITH LOCAL BUILDINGS OFFICIALS BEFORE COMMENCEMENT OF SYSTEM INSTALLATION. CHANGES OR MODIFICATIONS TO PIPING OR DESIGN IS NOT TO BE PERFORMED WITHOUT EXPRESSED WRITTEN PERMISSION BY NAVIEN, INC.

- (A) TANKLESS CIRCULATOR (BRONZE OR SS)
 SELECTED CIRCULATOR SHALL BE 36 GPM
 MAXIMUM (9 TANKLESS, 4 PER TANKLESS)
 ● 23' TOTAL HEAD (10 PSI) + PIPE,
 VALVES, FITTINGS & TANK.
- (B) INSTALL CIRCUIT SETTERS TO MAINTAIN
 FLOW INTO UNITS ● 4 GPM MAXIMUM.



PROJECT INFO:

-
-
-

TANKLESS QUANTITY: RECOMMENDED PIPE SIZE	1 UNIT: 3/4"	2 UNITS: 1"	3 UNITS: 1-1/4"	4-5 UNITS: 1-1/2"	6-8 UNITS: 2"	9-14 UNITS: 2-1/2"	15-16 UNITS: 3"	SYMBOL LEGEND			
NPE-S2 SERIES TANKLESS WATER HEATER								UNION	CHECK VALVE	FULL-PORT VALVE	AQUASTAT
(9) NPE-S2 TANKLESS WATER HEATERS WITH (3) STORAGE TANKS TO MEET FLOW/TEMP RISE REQUIREMENT INCLUDES MODELS 150, 180, 210 AND 240								CONTROL WIRING	PRESSURE RELIEF VALVE	CIRCULATOR	EXPANSION TANK
DRAWN BY: S. STOEKE								CASCADE CABLE	BALANCING VALVE	CIRCULATOR ZONE PANEL	
NPE-S2-9-ST-3				MAY 24, 2021							

20 GOODYEAR
 IRVINE, CA 92618
 800-519-8794
 www.navieninc.com