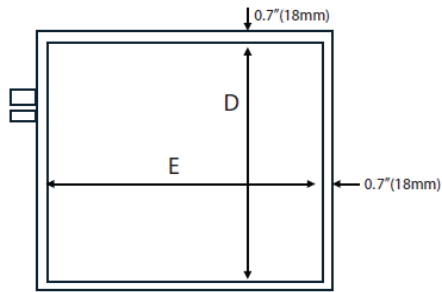


-



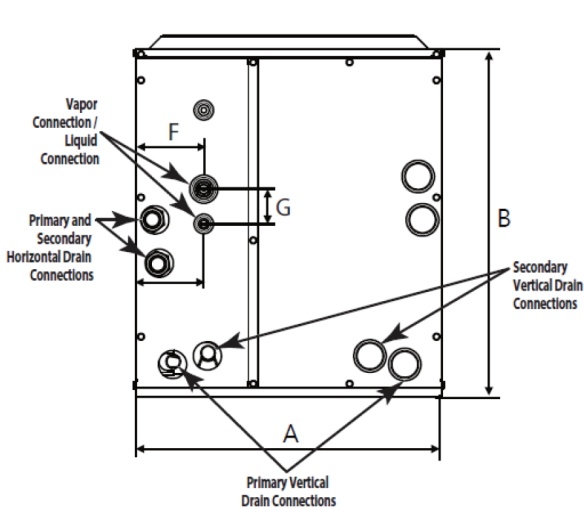
MODEL NUMBER NOMENCLATURE									
	N	A	M	24	B	2	T	A	1
	I	II	III	IV	V	VI	VII	VIII	IX
I	Brand N = Navien								
II	Business Unit A = Air								
III	Product M = Multi Position Cased Coil								
IV	Nominal Capacity 24 = 24,000 Btu/h 36 = 36,000 Btu/h 48 = 48,000 Btu/h 59 = 60,000 Btu/h								
V	Width A = 14.5" B = 17.5" C = 21.0" D = 24.5"								
VI	Refrigerant 1 = R410A 2 = R454B								
VII	Expansion Device F = Fixed Orifice T = TXV E = EEV								
VIII	Major Revision Level								
IX	Minor Revision Level								

DIMENSIONS / SPECIFICATIONS

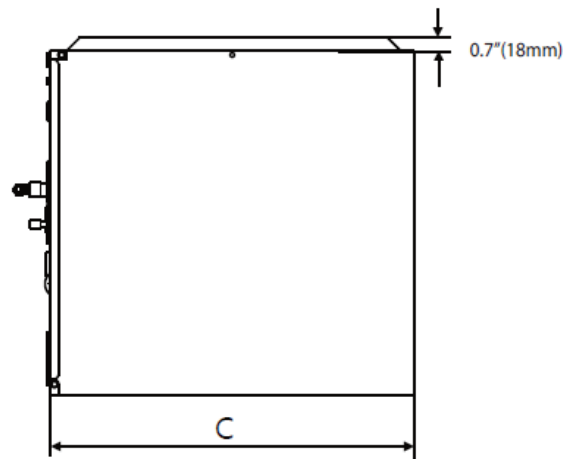


<TOP VIEW>

CASED COIL DIMENSIONAL DATA														
	A		B		C		D		E		F		G	
Model	in	cm	in	cm	in	cm	in	cm	in	cm	in	cm	in	cm
NAM24B, 36B	17.5	44.5	20.1	51.0	21.1	53.5	16.0	40.6	19.6	49.7	3.4	8.6	1.6	4.1
NAM36C	21.0	53.3	20.1	51.0	21.1	53.5	19.5	49.5	19.6	49.7	3.4	8.6	1.6	4.1
NAM48C, 59C	21.0	53.3	34.1	86.5	21.1	53.5	19.5	49.5	19.6	49.7	4.7	11.9	2.4	6.0
NAM59D	24.5	62.2	34.1	86.5	21.1	53.5	23.0	58.4	19.6	49.7	4.7	11.9	2.4	6.0



<FRONT VIEW>



<SIDE VIEW>

	MAN24B	NAM36B	NAM36C	NAM48C	NAM59C	NAM59D
Liquid Line, in (mm)	3/8 (9.5)					
Vapor Line, in	3/4 (19.1)			7/8 (22.2)		
Metering Device	TXV					
Face Area, sq. in	3.56			6.67		
Tube Diameter, in	3/8					
Number of Rows	3					
Fins per Inch	16					
Drain Connection	3/4" NPT					
Net Weight, lbs (kg)	44 (20.0)		48 (21.8)	76 (34.5)		81 (36.7)
Shipping Weight, lbs (kg)	50 (22.7)		54 (24.5)	84 (38.1)		89 (40.4)
Cased Coil Dimensions, in (LxWxH)	21.0 x 17.5 x 20.0		21.0 x 21.0 x 20.0	21.0 x 21.0 x 34.0		21.0 x 24.5 x 34.0
Shipping Dimensions, in (LxWxH)	18.5 x 22.25 x 22		22 x 26.25 x 21.75	22 x 25.25 x 36.75		25.25 x 25.25 x 36.75
Cased Coil Dimensions, mm (LxWxH)	533 x 444 x 508		533 x 533 x 508	533 x 533 x 864		533 x 622 x 864
Shipping Dimensions, mm (LxWxH)	470 x 565 x 559		559 x 667 x 552	559 x 641 x 933		641 x 641 x 933

• **AIRFLOW / PRESSURE DROP DATA**

Wet Air Pressure Drop (in-WC) 80F DB/67F WB/50F Evap.								
Model	600 cfm	800 cfm	1000 cfm	1200 cfm	1400 cfm	1600 cfm	1800 cfm	2000 cfm
NAM24B	0.13	0.15	0.21	0.29				
NAM36B	0.13	0.15	0.21	0.29	0.37			
NAM36C	0.09	0.14	0.20	0.27	0.34	0.43		
NAM48C			0.08	0.10	0.13	0.16	0.20	0.24
NAM59C			0.08	0.10	0.13	0.16	0.20	0.24
NAM59D			0.07	0.09	0.12	0.15	0.18	0.22

Dry Air Pressure Drop (in-WC) 80F DB/60F WB/50F Evap.								
Model	600 cfm	800 cfm	1000 cfm	1200 cfm	1400 cfm	1600 cfm	1800 cfm	2000 cfm
NAM24B	0.09	0.09	0.13	0.17				
NAM36B	0.09	0.09	0.13	0.17	0.25			
NAM36C	0.05	0.08	0.12	0.16	0.21	0.26		
NAM48C			0.05	0.06	0.08	0.10	0.12	0.15
NAM59C			0.05	0.06	0.08	0.10	0.12	0.15
NAM59D			0.04	0.06	0.08	0.10	0.12	0.14