

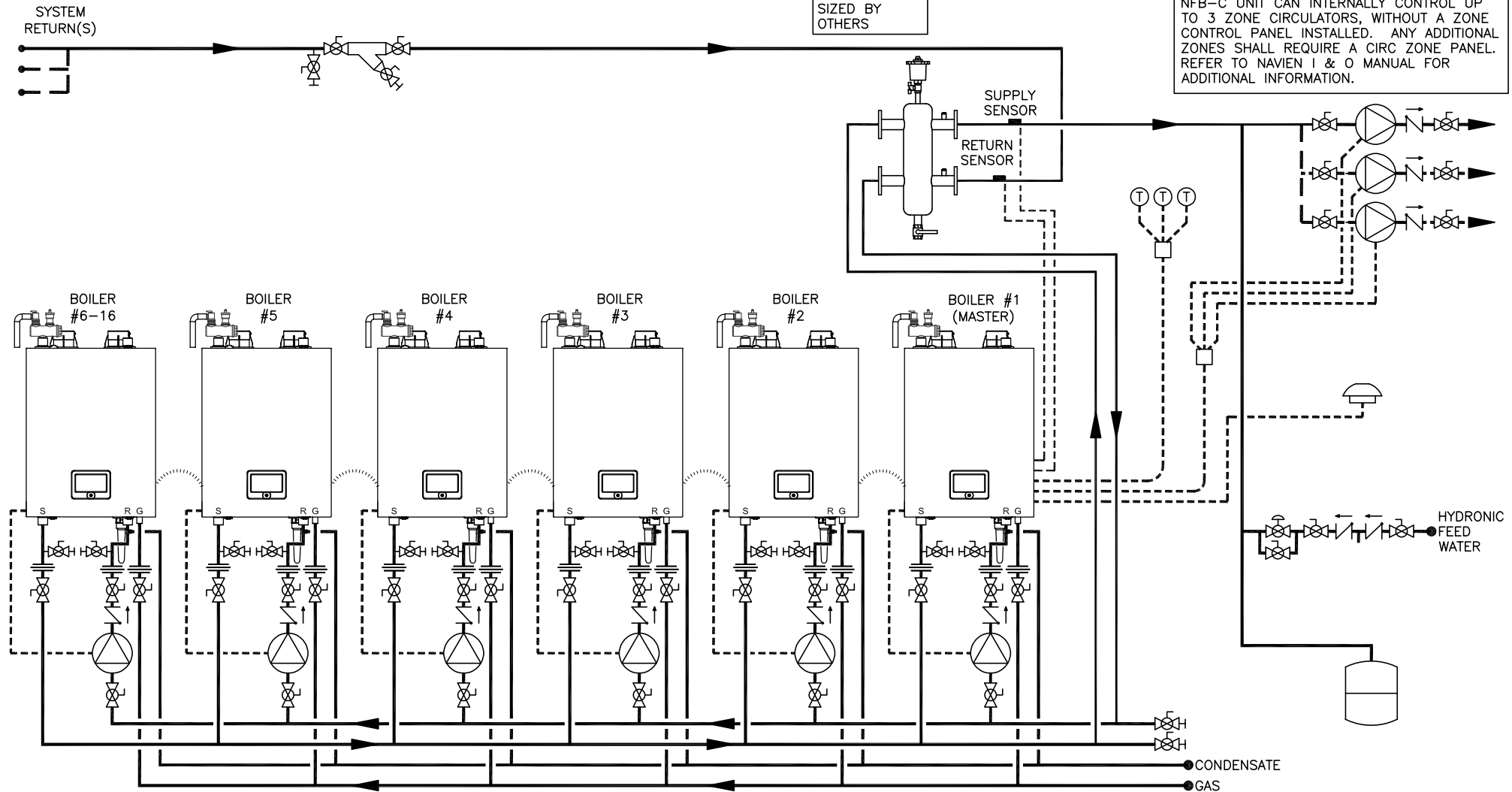
THIS DRAWING IS INTENDED ONLY AS A GUIDE AND NOT AS A REPLACEMENT FOR PROFESSIONALLY ENGINEERED PROJECT DRAWINGS. THIS CONCEPT SYSTEM DRAWING DOES NOT IMPLY COMPLIANCE WITH LOCAL BUILDING CODES. ACTUAL INSTALLATION MAY VARY DEPENDING ON INSTALLATION LOCATION AND PARAMETERS AND IT MUST BE DONE IN ACCORDANCE TO ALL LOCAL BUILDING CODES. VERIFY WITH LOCAL BUILDINGS OFFICIALS BEFORE COMMENCEMENT OF SYSTEM INSTALLATION. CHANGES OR MODIFICATIONS TO PIPING OR DESIGN IS NOT TO BE PERFORMED WITHOUT EXPRESSED WRITTEN PERMISSION BY NAVIEN, INC.

RECOMMENDED SYSTEM & HEADER PIPE SIZES – TOTAL BTU (>4 FT/SEC.)

- 1-1/2" – UP TO 301,000 BTU'S (1 BOILER)
- 2" – 399,000 BTU'S (1 BOILER)
- 2-1/2" – 601,000 TO 798,000 BTU'S (2 BOILERS)
- 3" – 903,000 TO 1,197,000 BTU'S (3 BOILERS)
- 4" – 1,204,000 TO 3,192,000 BTU'S (4 TO 8 BOILERS)

NOTE:
HYDRAULIC
SEPARATOR
SIZED BY
OTHERS

NFB-C UNIT CAN INTERNALLY CONTROL UP TO 3 ZONE CIRCULATORS, WITHOUT A ZONE CONTROL PANEL INSTALLED. ANY ADDITIONAL ZONES SHALL REQUIRE A CIRC ZONE PANEL. REFER TO NAVIEN I & O MANUAL FOR ADDITIONAL INFORMATION.



| SYMBOL LEGEND | | | |
|----------------------------|-----------------------|---------------------|-------------------------|
| BACKFLOW PREVENTER | CHECK VALVE | FULL-PORT VALVE | EXPANSION TANK |
| CONTROL WIRING | PRESSURE RELIEF VALVE | CIRCULATOR | THERMOSTAT |
| CONDENSATE TRAP | AIR ELIMINATION | CASCADE CABLE | BALL DRAIN VALVE |
| OUTDOOR TEMPERATURE SENSOR | AUTOMATIC AIR VENT | BOILER RELIEF VALVE | PRESSURE REDUCING VALVE |
| WYE STRAINER W/ BLOWDOWN | UNION | HYDRAULIC SEPARATOR | |



20 GOODYEAR
IRVINE, CA 92618
800-519-8794
www.navienc.com

NFB-C SERIES BOILER

(6) TO (16) NFB-C CONDENSING BOILERS WITH
COMMON SECONDARY INJECTION PIPING WITH HYDRAULIC SEPARATOR
INCLUDES MODELS NFB-301C, 399C

DRAWN BY: S. STOEKE

NFB-C-6+-ZC-MULT-C-HS

DECEMBER 14, 2021